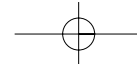


## Contents

Introduction.....	1
Installation\In Use.....	2
Tuning.....	3
Programming the Presets.....	4
Using the Presets.....	5
The optional Remote Control.....	6
Additional Remote functions.....	7
No Sound from the Speakers.....	8
Reception Problems.....	9
Use in North America.....	10
Aerial information.....	11-12
Back Panel.....	13
Specifications.....	14
Owners Log.....	15



## Introduction

Your Rega **Radio** has been designed as a high quality source, able to reproduce a broadcast easily and effectively at a competitive price.

The **Radio** has been built to Rega's usual discriminating standards of reliability and quality to ensure many years of musical enjoyment with improved AM function.

A tuner's function is to oscillate along with the tiny electromagnetic vibrations that are a radio signal. The ability of a tuner to oscillate at a stable, predetermined frequency matching that of the signal - is directly related to its quality.

In addition to meeting this requirement, the **Radio** allows fine tuning between the normal incremental steps. To fully appreciate the quality of the Rega **Radio** however, it's only necessary to switch on, sit back and enjoy the music.

Use the AM/FM button to select between Wavebands.

If a programme is broadcast in mono, the **Radio** may be switched to Mono mode. This can improve the audibility of certain programmes by reducing cross channel 'mush'.

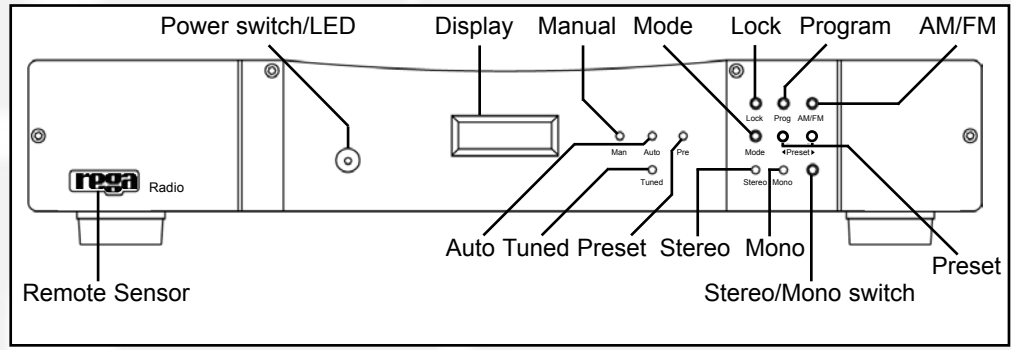
## Installation

The **Radio** will work well on most surfaces, such as a shelf or table, provided there is sufficient air around it to prevent overheating.

For maximum performance place unit as far away as possible from fridges, cookers, fluorescent lights etc.

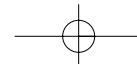
Never stack Hi-Fi equipment directly on top of one another.

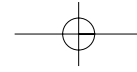
## In Use



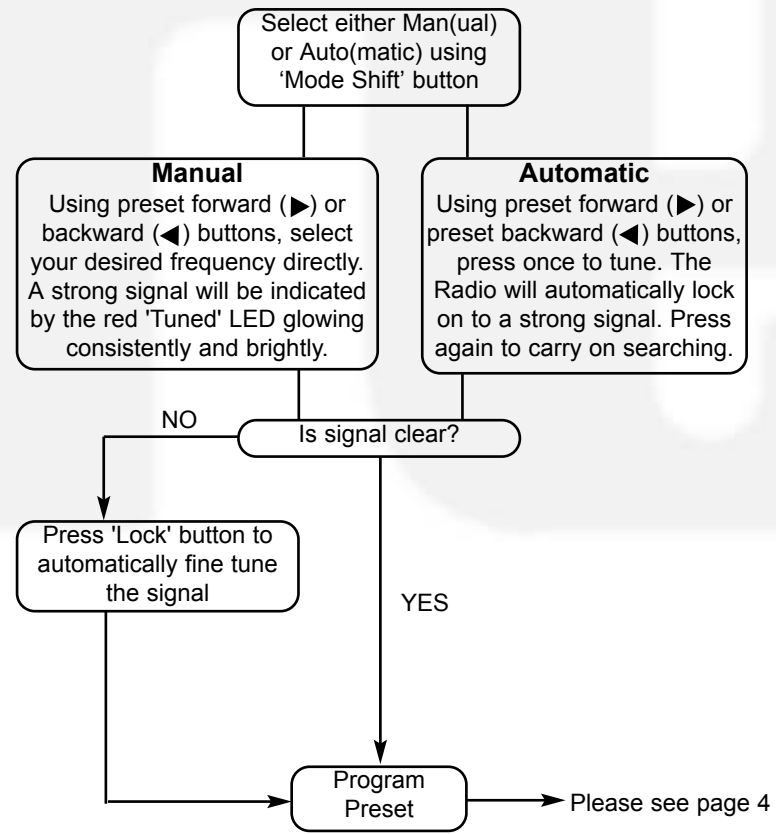
**Mission Statement**

Rega's philosophy is to make high quality products at sensible prices, as a means of reproducing music as faithfully as possible. Rega is committed to the design and development of new and existing products, both in hi-fi and other areas, that will perpetuate Rega's values of quality and value for money.

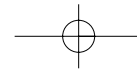
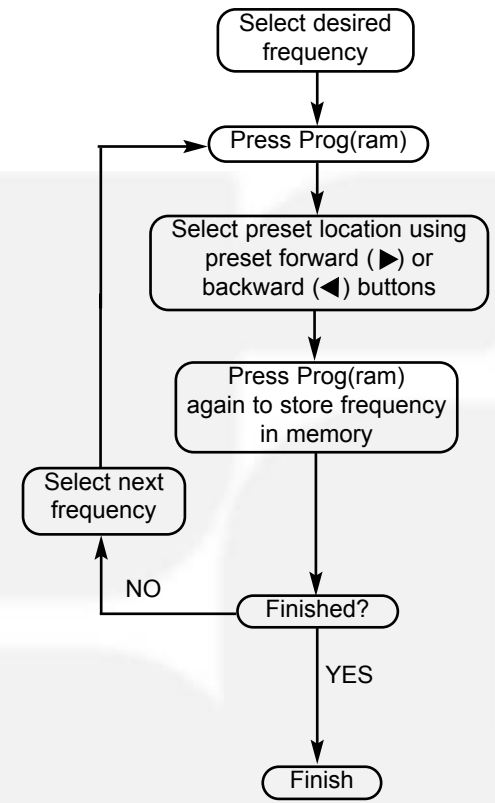


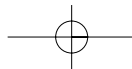


### Tuning

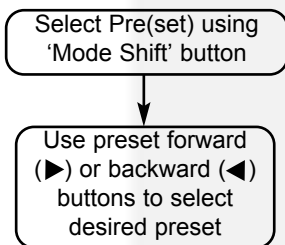


### Programming the Presets





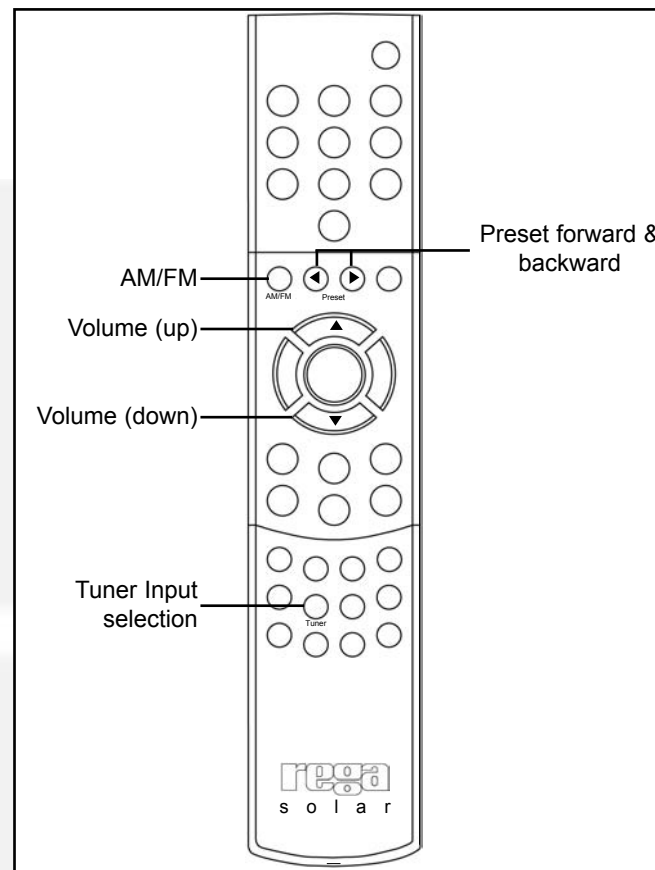
## Using the Presets



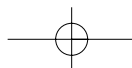
5

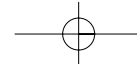


## The optional Remote Control



6





### Additional Functions (Remote Option Only)

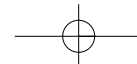
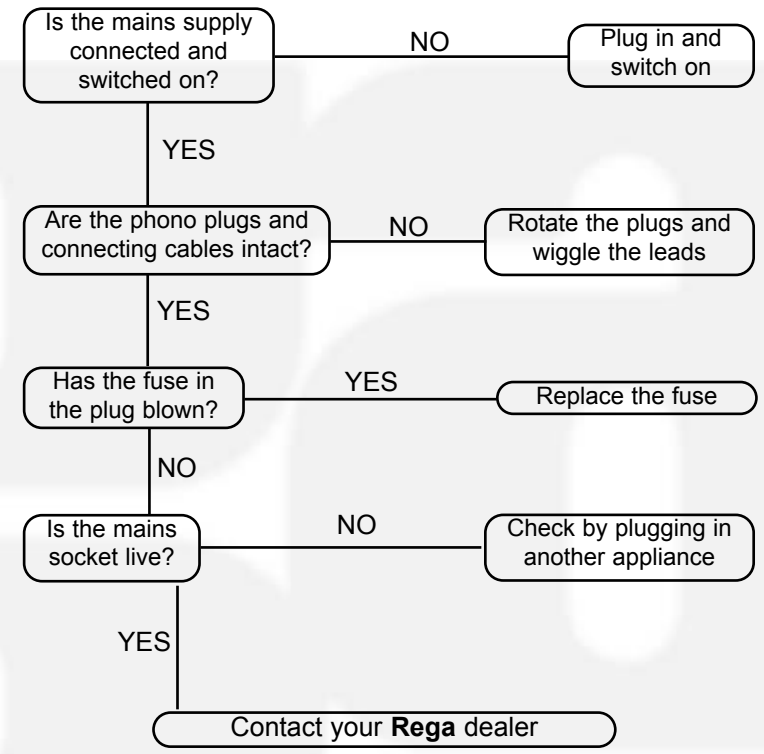
Having purchased your **'Solar'** all system remote control it is possible to enjoy your favourite radio station from the comfort of your chair just by selecting the 'Tuner' button on your handset.

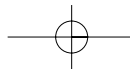
It is possible to skip between Wavebands that have been pre-set on the Radio itself. You can do this using a combination of the buttons (shown on the previous diagram) AM/FM and preset forward and backward.

If you are using a Rega remote controllable amplifier or pre-amplifier, it is also possible to adjust the volume using the **'Solar'**.

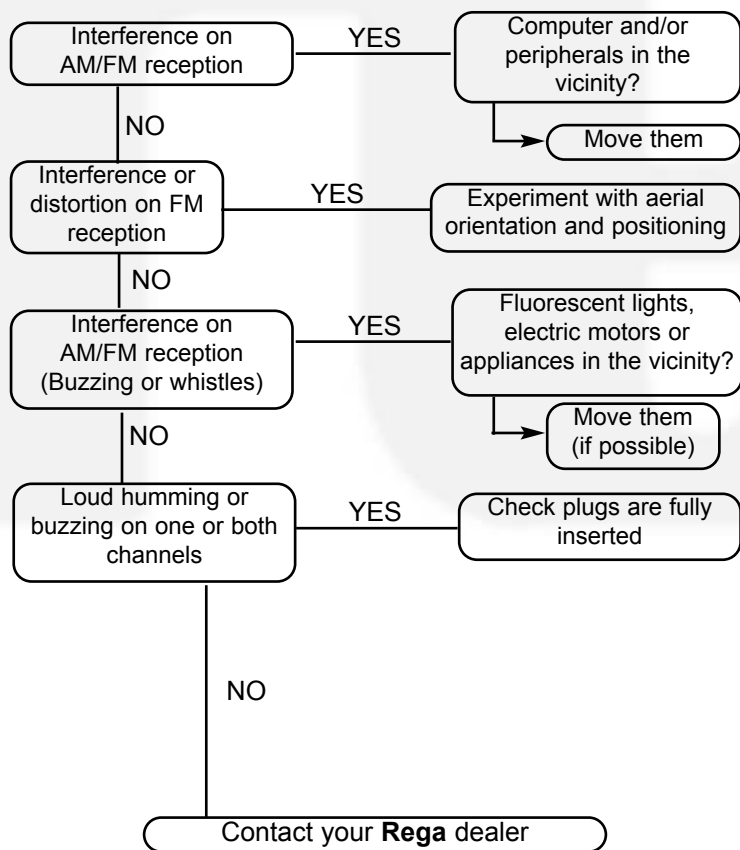


### No sound from Speakers



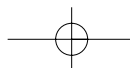
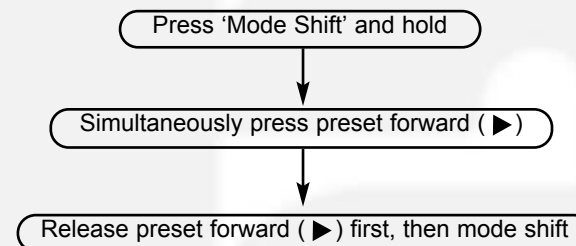


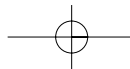
### Reception Problems



### Use of the Radio in North America

In North America, AM frequency steps through 10 KHz increments instead of 9 KHz for Europe. To toggle from 9 to 10 to 9 KHz follow this procedure:-





## Aerial Information

The Radio needs to be connected to an aerial to work. The FM aerial socket (No.1 on 'Back Panel' page 13) is designed to accept a 75 Ohm coaxial cable. If a 300 Ohm twin lead wire is used to connect an aerial, use a 300-75 Ohm adapter.

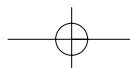
The very best results from the Radio will be obtained when using a Multi-element aerial mounted externally.

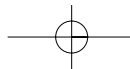
An aerial will also be needed for AM reception. This should consist of a simple single wire, up to a metre long, connected to the tuner's AM socket (No.3 on 'Back Panel' page 13) and if possible laid horizontally along its length. Try to avoid metal shelving and experiment for the best reception.

Distant AM reception can be improved\* by using a 'long-wire' aerial, mounted externally, parallel to the ground. This should be a single wire, up to 30 metres long.

Further improvements may be made by connecting the earth socket (No.2 on 'Back Panel' page 13) on the **Radio**, to earth, via a copper plated rod driven into the ground. A substitute electrical earth, such as a **cold** water pipe may also prove effective.

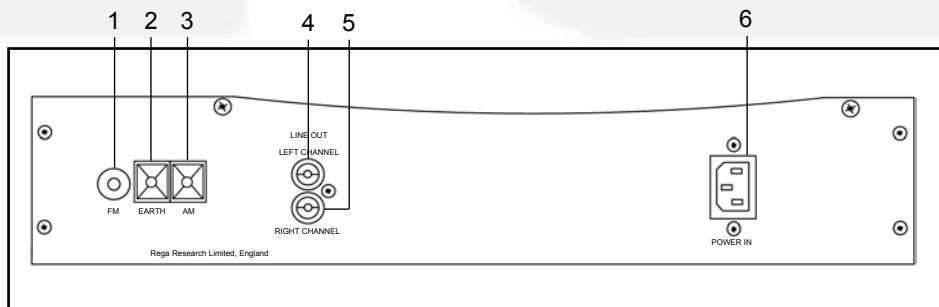
{\*Please Note:- If you are close to a broadcasting aerial, the reception of local AM stations may actually be worsened by this method.}





## Back Panel

- 1) FM aerial socket
- 2) Earth socket
- 3) AM aerial socket
- 4) Left channel coaxial input (white)
- 5) Right channel coaxial input (red)
- 6) IEC Power input



## Specifications

FM section.  
 Input Sensitivity. IHF -2dB $\mu$ V.  
 Mono 50dB S/N 3dB $\mu$ V.  
 Stereo 50dB S/N 29dB $\mu$ V.

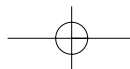
Capture Ratio (45 and 65dBf) <<1.6dB.  
 AM Rejection (45 and 65dBf) >60dB.  
 Selectivity Alternate Channel 73dB @100 $\mu$ V.  
 Image Rejection >83dB.  
 IF Rejection >100dB.  
 Subcarrier Suppression 60dB.

THD Mono 1KHz 0.08%.  
 6KHz 0.3%.  
 THD Stereo 1KHz 0.1%.  
 6KHz 0.25%.

Signal to Noise Ratio Bandwidth 30Hz to 15KHz.  
 Mono 81dB.  
 Stereo 74dB.  
 Frequency Response 30Hz to 15KHz +/-0.5dB.  
 Stereo Separation 1K 53dB.  
 6K 50dB.  
 10K 39dB.

AM Section.  
 Sensitivity 10 $\mu$ V.  
 Selectivity 30dB.  
 Image Rejection 45dB.  
 IF Rejection 35dB.  
 Signal to Noise 45dB.  
 THD 0.5%.

NEC Custom System Remote Control.



### Owners Log

(1)  
Owner.....  
Date.....  
Where Purchased.....  
.....

(2)  
Owner.....  
Date.....  
Where Purchased.....  
.....

(3)  
Owner.....  
Date.....  
Where Purchased.....  
.....

