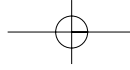


# Brio

## Integrated Amplifier

---

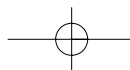
owners manual

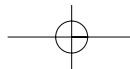


## Contents

Introduction.....	1
Installation.....	2
Input Connections.....	3-5
In Use.....	5
Specifications.....	6
Troubleshooting.....	7-11

rega





## Introduction

Your REGA amplifier has been designed to reproduce music effectively and easily.

The **Brio** has been built to Rega's discriminating standards of reliability and quality to ensure many years of musical enjoyment.

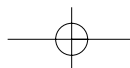
An amplifier's function is to boost the tiny signal generated by a cartridge or other source so that it can drive loudspeakers. It is vital that the amplifier achieves this without changing the signal and so distorting the music.

We have avoided superfluous gadgets such as tone controls or a head phone socket as they obstruct the signal path and degrade the produced sound quality. In common with all REGA products, the **Brio** has been built using unusually high quality components and no frills, so that you can simply switch on, sit back, and let your amplifier speak for itself.....

### Mission Statement

Rega's philosophy is to make high quality products at sensible prices, as a means of reproducing music as faithfully as possible. Rega is committed to the design and development of new and existing products, both in hi-fi and other areas, that will perpetuate Rega's values of quality and value for money.

1



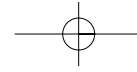
## Installation

The **Brio** will work well on most surfaces, such as a shelf or table, provided there is sufficient air around the amplifier to prevent overheating. To avoid magnetic interference, site the amplifier as far away from the turntable as the tone arm lead will allow. If possible, place it to the left of the turntable. Keep other equipment, such as tuners, cassette decks or CD players away from the amplifier. Never stack other hi-fi equipment on top of the amplifier.

## Ventilation

The heat produced by the **Brio** is dispersed to the air by the case, particular from the base. Ensure that the case has an unobstructed air passage around it. Never place the amplifier on carpet, rugs, bedding, or other hi-fi equipment.

2

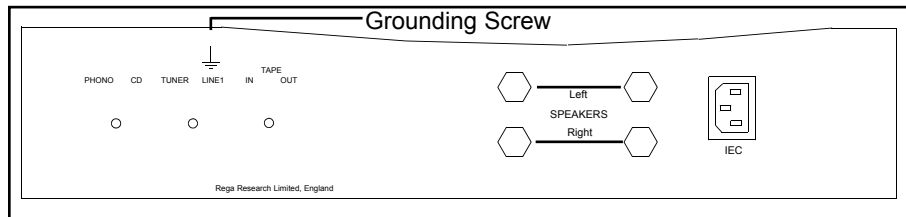


## Input Connections

All the inputs and the tape outputs are made via RCA (Phono) type connectors. The sockets on Rega amplifiers are clearly marked left and right.

**Right:** always the lower row and marked in **RED**  
**Left:** always the upper row and marked in **WHITE**

**IMPORTANT: ALWAYS TURN OFF THE AMPLIFIER WHEN CHANGING LEADS  
ESPECIALLY SPEAKER CABLES.**



## Rear Panel Connections

**Earthing:** Earthing is done via the Phono socket ground for Rega turntables so a separate earth is not necessary. In the unlikely event that your tonearm needs to be earthed to the amplifier, the grounding tag may be connected to the case grounding screw above the input sockets.

### Phono Input

The Phono input can be used with moving magnet (MM) or HIGH OUTPUT moving coil (MC) cartridges.

### Compact Disc Input

The CD input is suitable for use with most types of CD players.

### Tuner Input

The tuner input is suitable for use with most tuners.

### Line Input

The Line input enables the connection of another source, such as a second tape machine, tuner, video recorder, etc...

### Tape Input/Output

Almost any tape machine can be used with the **Brio**, including compact cassette, video cassette, reel to reel, DAT and DCC.

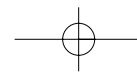
### Tape Output

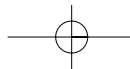
This output monitors any one of the inputs selected by the input selector.

**NOTE:** This function is disabled when tape input is selected.

### Loudspeakers

The Brio is capable of driving all normal Hi-Fi loudspeakers with a stated impedance of 8 ohms and above. (Most Loudspeakers are nominally 8 ohms).





## Loudspeaker Cable

We recommend using good quality cable such as our own, or similar types made by QED or Naim. Very expensive cable claiming to use special materials and technologies along with "solid core" or OFC types are not recommended. Try to keep cable runs to either speaker of similar length. Your Rega dealer will be able to make up specific lengths of cable for you with plugs (where required) already fitted. **Never** join cables together to increase their length.

**Damage by shorting:** Never short (i.e. touch together), the bare ends of the speaker cable on any amplifier. However, the protection circuit will prevent damage in the case of accidental shorting.

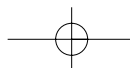
## In Use

### Switching On

The Brio is turned on by depressing the power switch on the left of the control panel. An LED in the power switch will glow red. At turn on an audible thump may be heard through the speakers, this is normal. **WARNING:** Never switch the amplifier on with the volume control set at or near maximum. After switching off, the LED will glow for several seconds before fading while the remaining charge in the smoothing capacitors is dumped.

### Input Selection

The **Brio's** five inputs - Tape, Line1, Tuner, CD and Phono are selected by turning the selector knob to the required input.



## Specifications

### Input sensitivity for rated output level.

Phono input sensitivity = 3mV @ 47K $\Omega$  in parallel with 100pF.  
Maximum input level = 150mV @ 1Khz.  
CD, Tuner, Line 1, Tape input sensitivity = 206mV @ 24K $\Omega$ .

### Power output 230V or 115V supply voltage.

38 Watts both channels driven into 8 $\Omega$ .  
45 Watts only one channel driven into 8 $\Omega$ .  
53.5 Watts both channels driven into 4 $\Omega$ .  
69 Watts only one channel driven into 4 $\Omega$ .

### Tape output level.

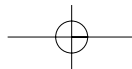
Tape output level (with rated input levels) = 198mV @ 470 $\Omega$ .

### Power consumption.

130 Watts @ 230V or 115V (38 Watts both channels driven into 8 $\Omega$ ).

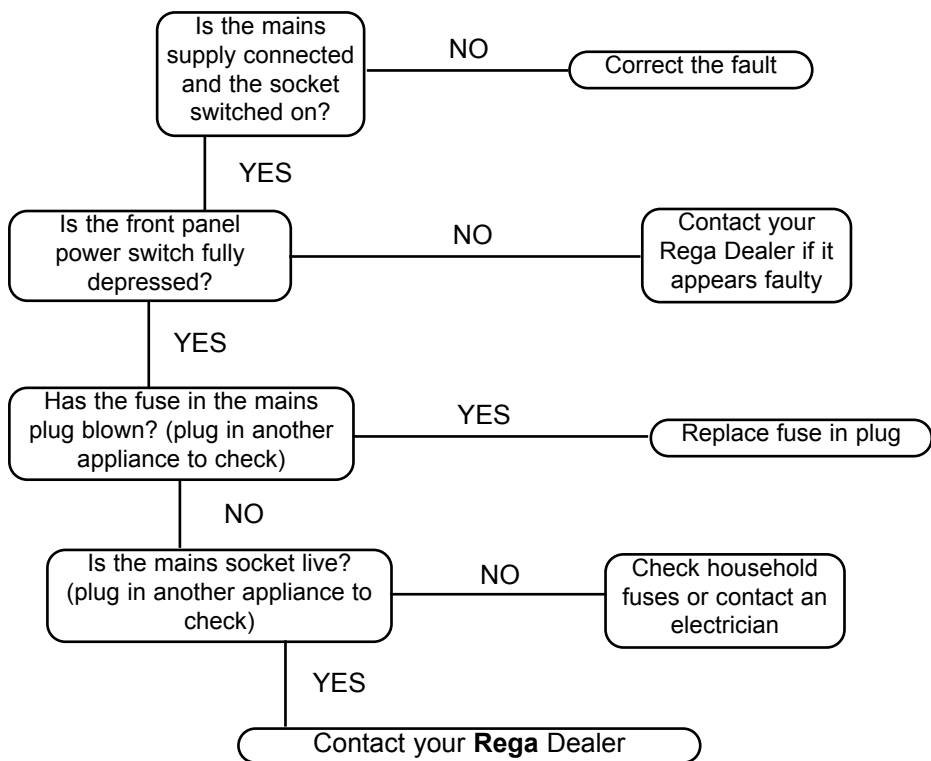
### Features.

Speaker protection.  
Fold-back short circuit protection.  
Reactive load protection.  
150 Watt output transistors.



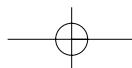
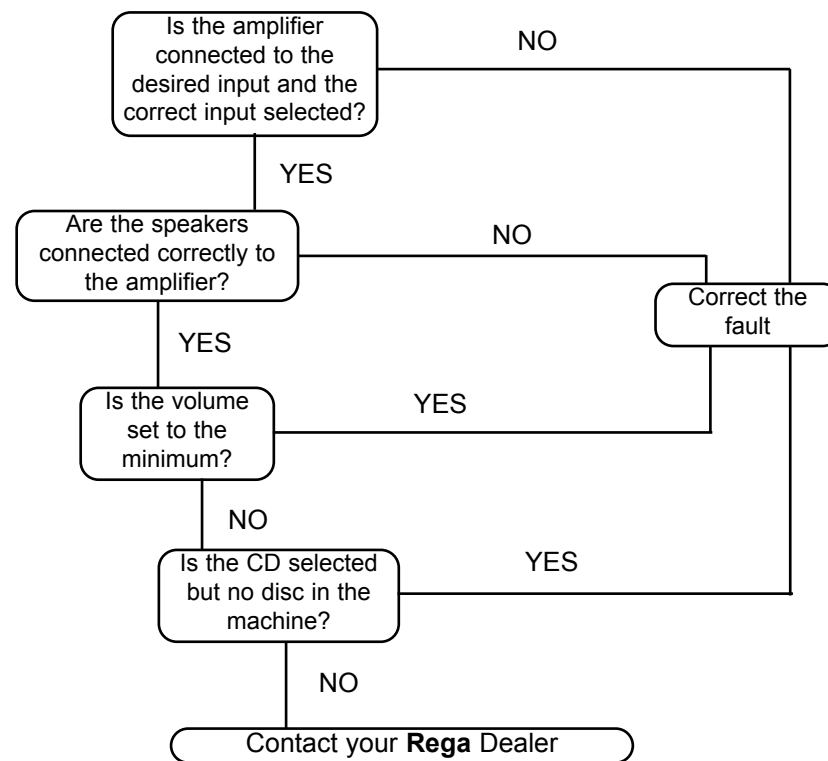
### Troubleshooting

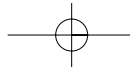
(No power, power switch LED does not light up)



### Troubleshooting

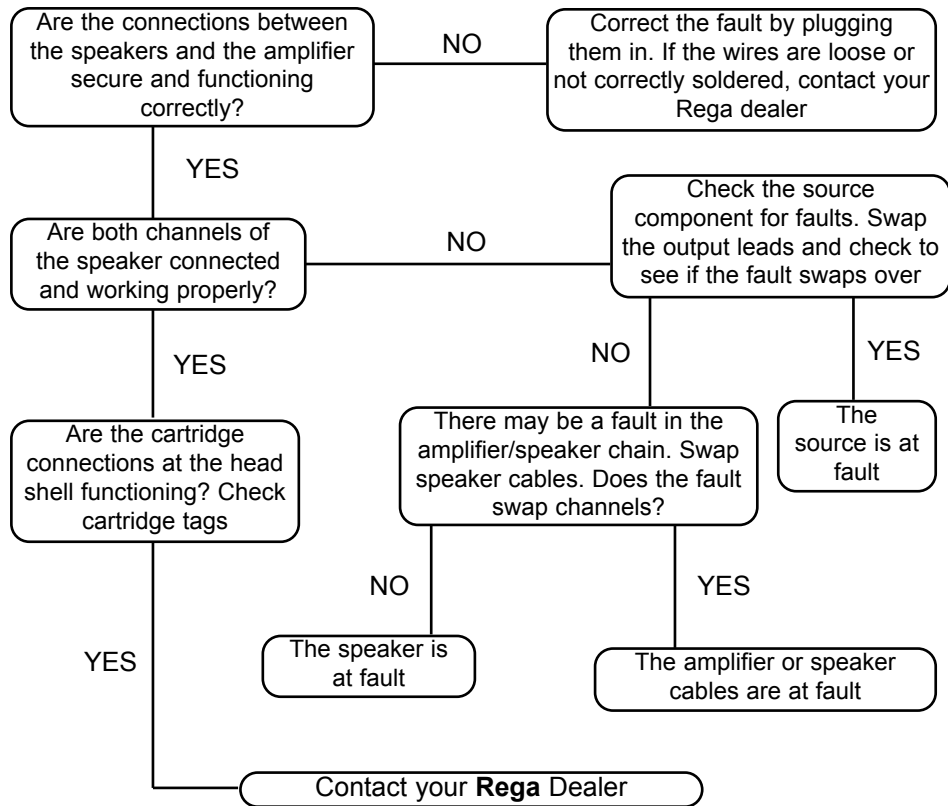
(Power on, power switch LED lit but no output)





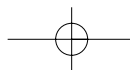
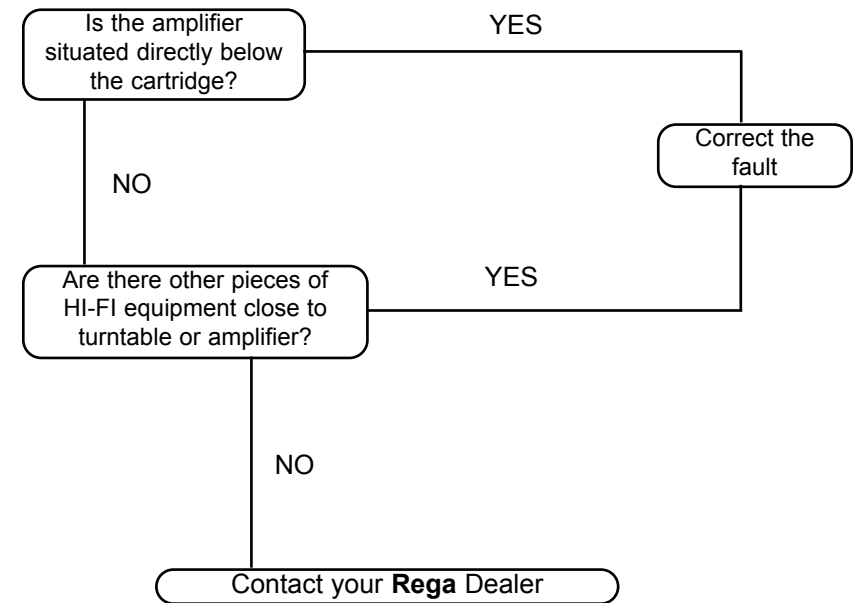
### Troubleshooting

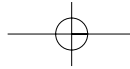
(Power on, sound from one speaker only)



### Troubleshooting

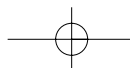
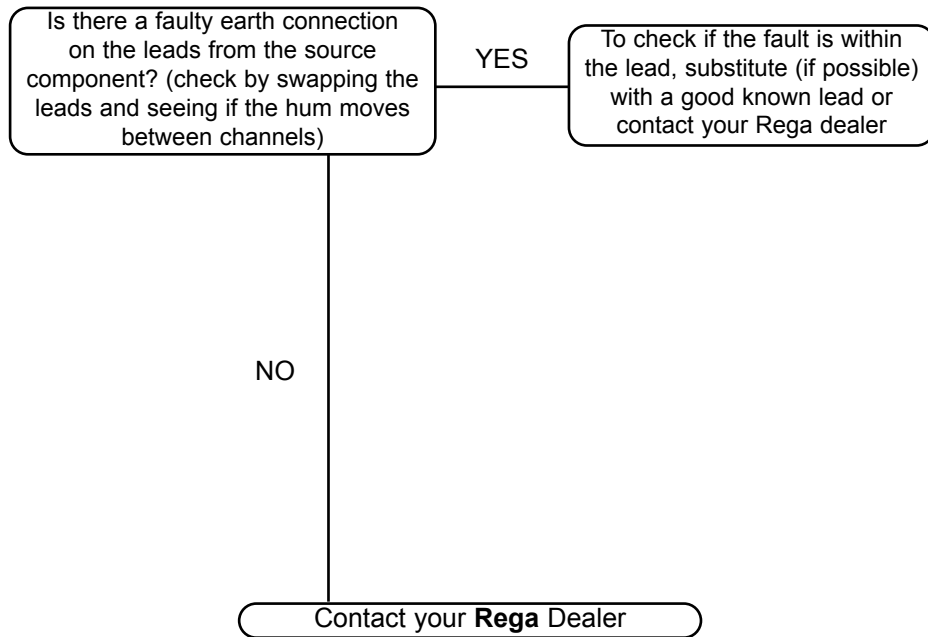
(Loud hum through both speakers when 'Phono' is selected)





### Troubleshooting

(Loud hum through one speaker when 'Phono' input is selected)



### Owners Log

(1)  
 Owner.....  
 Date.....  
 Where Purchased.....  
 .....

(2)  
 Owner.....  
 Date.....  
 Where Purchased.....  
 .....

(3)  
 Owner.....  
 Date.....  
 Where Purchased.....  
 .....